

# Meet Us on the Mountain

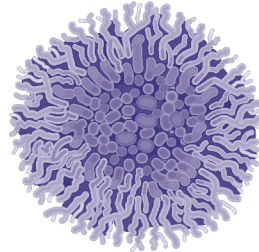


Exploring your world,  
one mission at a time  
[pbskids.org/plumlanding](http://pbskids.org/plumlanding)

## Lichen

### Where Does It Live?

Lichen can grow almost anywhere—in really hot, cold, or even toxic areas.



### How Does It Live?

It lies on the side of a rock! It's living the dream.

### What Can It Do?

It's a fungus that lives as a partner with an algae (the stuff that makes scum on a pond). The fungus is a home and the algae turns water, air and energy from the sun into food.

### But That's Not All!

Scientists study lichen to see the effect of pollution in an area because lichens are very sensitive to pollution.

## Snowshoe Hare

### Where Does It Live?

They live in the northern forests and eat plants and twigs.



### How Does It Live?

They have about four litters of babies every year. This helps their population survive against their many predators (like weasels, lynx, and housecats).

### What Can It Do?

These hares have big feet that stop them from sinking into the snow and have fur on the soles to protect them from the icy cold.

### But That's Not All!

Their fur turns white during the winter and brown during the summer — great for camouflage.

## Balsam Poplar Tree

### Where Does It Live?

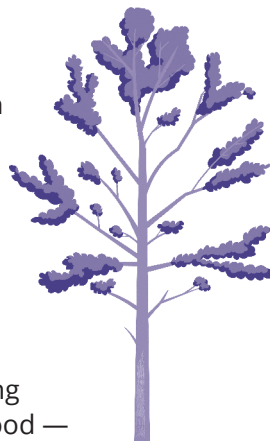
It can be found across northern Canada.

### How Does It Live?

The poplar tree lives near water — either rivers or where the snow melts.

### What Can It Do?

Its resin can be used as a healing ointment. Its wood — cottonwood — is used to make houses.



### But That's Not All!

A poplar tree can live 200 years — as long as it is not cut down for its wood!

## Goshawk

### Where Does It Live?

These hawks hunt during the day, looking for birds and small animals.

### How Does It Live?

They have big nests that are hard to get to. This helps protect their babies from bears.

### What Can It Do?

Their wings can be tucked in so they can swoop through narrow gaps in the trees to chase their prey.

### But That's Not All!

The females are bigger than the males.



**WGBH** PLUM LANDING is produced  
by WGBH Boston

MAJOR FUNDING



THE  
Kendeda  
FUND

ADDITIONAL FUNDING



# Meet Us on the Mountain



Exploring your world,  
one mission at a time  
[pbskids.org/plumlanding](http://pbskids.org/plumlanding)

## Moose

### Where Does It Live?

These massive vegetarians are the biggest deer in North America.



### How Does It Live?

Their huge antlers (horns) are made of a kind of bone. They use these for protection or for fighting other moose.

### What Can It Do?

They are preyed on by wolves, bears, and human hunters.

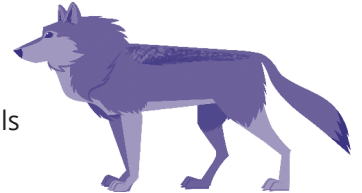
### But That's Not All!

Males are called bulls, females are called cows!

## Gray Wolf

### Where Does It Live?

Wolves hunt in packs to bring down big animals like moose and elk.



### How Does It Live?

They howl, bark, and growl to communicate with others in the pack.

### What Can It Do?

They hunt within an area that can be hundreds of miles wide.

### But That's Not All!

Conservation work has helped the wolves grow in numbers.

## Columbian Ground Squirrel

### Where Does It Live?

Its diet is mostly grasses and plant parts — stems, leaves, bulbs, fruits, and seeds. Sometimes it will eat birds, insects, or other small animals.



### How Does It Live?

Unlike most squirrels, a Columbian ground squirrel lives in burrows in the ground.

### What Can It Do?

It hibernates. That means the squirrel sleeps through the winter to avoid the cold.

### But That's Not All!

It makes barking and whistling sounds to communicate with other ground squirrels.

## Whitebark Pine

### Where Does It Live?

Forests of whitebark pine can be seen across northern Canada.



### How Does It Live?

They produce pine cones, which are clusters of pollen and seeds.

### What Can It Do?

Whitebark pines are an important source of food for many birds and small mammals, including the Clark's nutcracker.

### But That's Not All!

They are threatened by white pine beetles, which have killed 750,000 trees in Yellowstone.



**WGBH** PLUM LANDING is produced  
by WGBH Boston

MAJOR FUNDING



Corporation  
for Public  
Broadcasting



THE  
Kendeda  
FUND

ADDITIONAL FUNDING



This PLUM LANDING material is based upon work supported by the National Science Foundation under Grant No. DRL-1114515. Any opinions, findings, and conclusions or recommendations expressed in this material are those of the author(s) and do not necessarily reflect the views of the National Science Foundation.

TM/© 2014 WGBH Educational Foundation

# Meet Us on the Mountain



Exploring your world,  
one mission at a time  
[pbskids.org/plumlanding](http://pbskids.org/plumlanding)

## Mourning Cloak Butterfly

### Where Does It Live?

These butterflies live in the trees and fold their wings back so they can hide against the dark bark of the trees.



### How Does It Live?

They eat a lot of leaves: these butterflies make some very hungry, hungry caterpillars.

### What Can It Do?

They can link up with other butterflies to scare off birds!

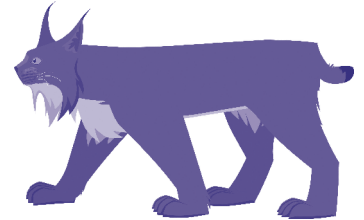
### But That's Not All!

Mourning is when you remember someone who has died. The name comes from its dark beautiful colors.

## Lynx

### Where Does It Live?

They live and hunt high up in the mountains.



### How Does It Live?

Canadian lynx are good climbers and swimmers.

They live under fallen trees or on rock ledges.

### What Can It Do?

Like their house-cat cousins they stalk and jump to catch rabbits, rodents, mice, and other prey.

### But That's Not All!

Their feet have thick pads to let them walk on snow.

## Clark's Nutcracker

### Where Does It Live?

They live in the mountain pines where they feast on tree seeds



### How Does It Live?

They use their sharp beaks to get the seeds from pine cones.

### What Can It Do?

The nutcracker has a pouch under its tongue that it uses to carry seeds long distances.

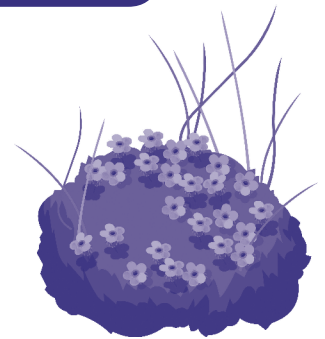
### But That's Not All!

Each nutcracker hides thousands of seeds every year and can remember where to find the seeds that it hides!

## Alpine Forget-Me-Nots

### Where Does It Live?

They live in alpine (mountain) meadows. They are Alaska's state flower.



### How Does It Live?

They are food for several kinds of butterfly and moth.

### What Can It Do?

There are very few blue flowers in nature.

### But That's Not All!

They get their name from being a symbol to help remember long-lost friends and family.



**WGBH** PLUM LANDING is produced  
by WGBH Boston

MAJOR FUNDING



THE  
Kendeda  
FUND

ADDITIONAL FUNDING

